

# THE GREENWICH HOSPITALITY NEWSLETTER

News & updates for Delamar & Longshore employees

## 401k Open Enrollment

401k Enrollment will be on April 1st. You must be with the company for six months to be eligible. Please reach out to [HR@thedelamar.com](mailto:HR@thedelamar.com) for any questions!



Daylight savings

March 11th, 2022

2:00 AM clocks are turned  
forward 1 hour



First Day of Spring!

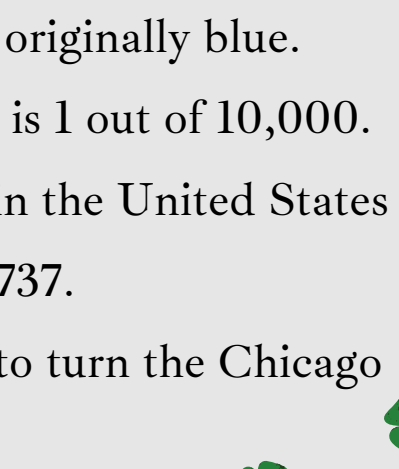
March 20th, 2022





# Happy St. Patrick's Day!

Here are 5 facts about the tradition:

1. On St. Patrick's Day over 13 million pints of Guinness are consumed!
  2. The color of St. Patrick's Day was originally blue.
  3. Your odds of finding a four-leaf-clover is 1 out of 10,000.
  4. The first St. Patrick's Day celebration in the United States was held in Boston in 1737.
  5. 60 lbs of green dye are used each year to turn the Chicago River green.
- 

## Property News

Delamar Southport rated top 25 in U.S. by TripAdvisor!



### Top 25 Hotels – United States

From family resorts to boutique charmers: the highest-rated stays around the world.

United States World Regions

Douglas the Dog in West Hartford was gifted a new Tiffany Collar!

***Congratulations...***



Kathryn Flores has been promoted to Social Media Manager!

**Congratulations!**

# *Birthday Celebrations*

## WEST HARTFORD

Maura H.- 3/01

Earl B.- 3/14

Kiara G.- 3/25

Larissa M.- 3/28

## GREENWICH

Diego Gallegos- 3/03

Mike C.- 3/08

Ronald S.- 3/09

Adrianna A.- 3/25

Fritz S.- 3/27

Eddie M.- 3/28

## SEAVIEW

Patryk B.- 3/10

Jessica F.- 3/22

## SOUTHPORT

Kathryn V.- 3/05

Mediha F.- 3/11

## LONGSHORE

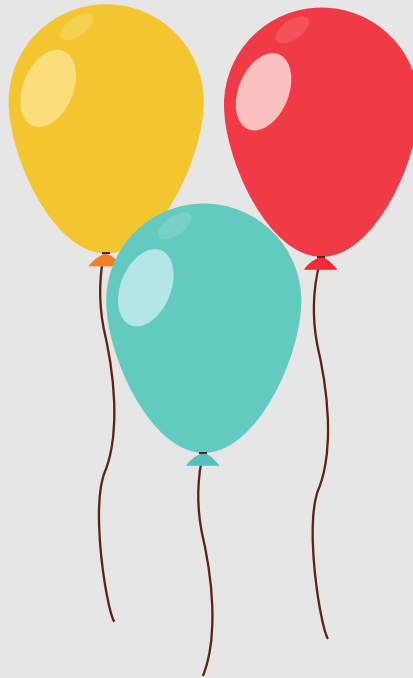
Debbie S.- 3/03

Nelson C.- 3/04

Jorge B.- 3/05

Adrienne M.- 3/09

Louis C.- 3/24



Happy birthday! We wish you a year filled with health and happiness!



## **Candy Jar Contest Winners!**

West Hartford - Kim R. & Samara M.

Southport - Jessica O.

Greenwich - Romulo A.

Seaview - Angelique G.

# Valentine Trivia Quiz Answers

- 1, In which country is it customary for women to give men chocolate on Valentine's Day?  
 a, Japan    b, Canada    c, Switzerland    d, Italy
- 2, Which movie was NOT released on Valentine's Day?  
a, Silence of the Lambs    b, A Good Day to Die Hard    c, Daredevil  
 d, 50 Shades of Grey
- 3, How much do people spend on Valentine's Day in America?  
a, \$10.5 million    b, \$8.3 billion     c, \$19.7 billion    d, \$40.2 billion
- 4, Which fast-food chain offers tableside service on Valentine's Day?  
a, KFC    b, Burger King    c, Quizno's     d, White Castle
- 5, In Roman mythology, who is Cupid's mom?  
a, Psyche     b, Venus    c, Juno    d, Luna
- 6, Which president lost his first wife on Valentine's Day?  
a, John Tyler    b, Millard Fillmore     c, Theodore Roosevelt    d, Woodrow Wilson
- 7, What was the name of the small heart-shaped sweets, manufactured by Swizzel, which had short romantic messages printed on them?  
a, Parma    b, Chews me    c, Jelly Belly     d, Love Hearts
- 8, Which one was considered Shakespeare's most romantic play?  
 a, Romeo and Juliet    b, Othello    c, The Tempest    d, Hamlet
- 9, Today we associate love with the heart, but this wasn't always the case. In medieval times, which internal organ was believed to cause love?  
a, The eyes     b, The liver    c, The kidneys    d, The lips
- 10, Approximately what percentage of Valentine's Day cards are purchased by women?  
a, 15     b, 85    c, 65    d, 35
- 11, What is the approximate date of the first Valentine ever sent?  
 a, 1415    b, 1316    c, 1217    d, 1615
- 12, A Roman myth says that roses grew when Cupid was carrying a certain liquid to the gods on Mt. Olympus. Cupid spilled the liquid and from that spot roses grew. What was the liquid?  
a, ambrosia     b, nectar    c, olive oil    d, wine



Name: \_\_\_\_\_

Date: \_\_\_\_\_

# Valentine's Day Word Scramble



1. PRAYT PARTY
2. FEORWSL FLOWERS
3. DICUP CUPID
4. NRREDIILFG GIRLFRIEND
5. SSKI KISS
6. DYANC CANDY
7. READIMR ADMIRER
8. NEIELTANV VALENTINE
9. HGU HUG
10. RESO ROSE
11. CCHAOTOLE CHOCOLATE
12. ETAD DATE
13. FENIDR FRIEND
14. RCDA CARD
15. HRATE HEART
16. ARETETEHWS SWEETHEART
17. LVOE LOVE
18. FRARBYUE FEBRUARY
19. TFIG GIFT
20. NFERIDYOB BOYFRIEND

# COVID UPDATE

People who test positive for COVID-19 should isolate for 5 days. They must seek a Dr's note in order to return. Additionally, CDC is updating the recommended quarantine period for anyone in the general public who is exposed to COVID-19. For people who are unvaccinated or are more than six months out from their second mRNA dose (or more than 2 months after the J&J vaccine) and not yet boosted, CDC now recommends quarantine for 5 days after exposure. For all those exposed, best practice includes a test for SARS-CoV-2 at day 5 after exposure. If symptoms occur, individuals should immediately quarantine until a negative test confirms symptoms are not attributable to COVID-19.

Isolation relates to behavior after a confirmed infection. Isolation for 5 days followed by wearing a well-fitting kn95 mask will minimize the risk of spreading the virus to others. Quarantine refers to the time following exposure to the virus or close contact with someone known to have COVID-19. Both updates come as the Omicron variant continues to spread throughout the U.S. and reflects the current science on when and for how long a person is infectious.”

**Please send a copy of your vaccination card to HR at  
HR@thedelamar.com**