



THE FEBRUARY ISSUE 2022

THE GREENWICH HOSPITALITY NEWSLETTER

News & updates for Delamar & Longshore employees

Insurance Open Enrollment Month!

- February is the month to enroll for health insurance. You may enroll for Medical, Dental, and/or Vision.
- Employees can enroll during the month of February.
- Employees who are full-time working 30+ hrs per week can enroll in the health insurance if they have successfully completed their 90-day probationary period.

A virtual open enrollment meeting will be held this month (*date TBD*) look on the breakroom bulletin for more info. This meeting will also cover 401k enrollments/changes as well as Aflac supplemental insurance information and medical plan changes.

Happy Valentine's Day!



Have you ever wondered about the origin of Valentine's Day?

Here are 5 facts about the tradition:

1. Valentine's Day is the 2nd largest card sending Holiday next to Christmas. According to Hallmark, about 145 million cards are exchanged on February 14th.
2. About 250 million roses are sold on Valentine's Day.
3. In 1861, Richard Cadbury created the first box of heart shaped chocolates.
4. Roman Pope Gelasius officially declared the date of February 14 "St. Valentine's Day" at the end of the 15th Century. It wasn't until the Middle Ages that the holiday became associated with love and romance. This tradition started from the belief in France and England that birds started their mating season on February 14.
5. The popular Valentine's Day candy, candy hearts, started out as medical throat lozenges. Oliver Chase, a pharmacist in Boston, saw how popular these pop-in medicines were and turned them into candy with sweet messages!

Birthday Celebrations

WEST HARTFORD

Dennis M. - 2/3

Carla D. - 2/5

Denise B. - 2/6

Eric W. - 2/21

Erin Z. - 2/25

Raymond G. - 2/28

GREENWICH

Edgar B. - 2/9

Romulo A. - 2/14

Doris O. - 2/21

Wilaine A. - 2/21

William S. - 2/26

SEAVIEW

Chrisnie S. - 2/26

SOUTHPORT

Enisa F. 2/16

Jessica O. - 2/19

Myrtha P. - 2/19

Pawel S. - 2/28

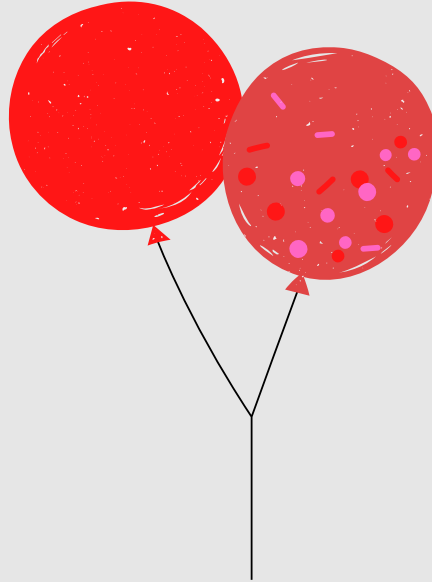
LONGSHORE

Michael R.- 2/15

Laina M.- 2/15

Lauren B.- 2/20

Takeya M.- 2/23



Happy birthday! We wish you a
year filled with health and
happiness!

Welcome to the Team!

Let's all welcome Ryane Rodriguez. Our new
Spa Manager at our West Hartford location!





Valentine Trivia Quiz



- 1, In which country is it customary for women to give men chocolate on Valentine's Day?
a, Japan b, Canada c, Switzerland d, Italy
- 2, Which movie was NOT released on Valentine's Day?
a, Silence of the Lambs b, A Good Day to Die Hard c, Daredevil
d, 50 Shades of Grey
- 3, How much do people spend on Valentine's Day in America?
a, \$10.5 million b, \$8.3 billion c, \$19.7 billion d, \$40.2 billion
- 4, Which fast-food chain offers tableside service on Valentine's Day?
a, KFC b, Burger King c, Quizno's d, White Castle
- 5, In Roman mythology, who is Cupid's mom?
a, Psyche b, Venus c, Juno d, Luna
- 6, Which president lost his first wife on Valentine's Day?
a, John Tyler b, Millard Fillmore c, Theodore Roosevelt d, Woodrow Wilson
- 7, What was the name of the small heart-shaped sweets, manufactured by Swizzel, which had short romantic messages printed on them?
a, Parma b, Chews me c, Jelly Belly d, Love Hearts
- 8, Which one was considered Shakespeare's most romantic play?
a, Romeo and Juliet b, Othello c, The Tempest d, Hamlet
- 9, Today we associate love with the heart, but this wasn't always the case. In medieval times, which internal organ was believed to cause love?
a, The eyes b, The liver c, The kidneys d, The lips
- 10, Approximately what percentage of Valentine's Day cards are purchased by women?
a, 15 b, 85 c, 65 d, 35
- 11, What is the approximate date of the first Valentine ever sent?
a, 1415 b, 1316 c, 1217 d, 1615
- 12, A Roman myth says that roses grew when Cupid was carrying a certain liquid to the gods on Mt. Olympus. Cupid spilled the liquid and from that spot roses grew. What was the liquid?
a, ambrosia b, nectar c, olive oil d, wine



www.MyPartyGames.com

Check back in our March newsletter for answers!

Name: _____ Date: _____

Valentine's Day Word Scramble



1. PRAYT _____
2. FEORWSL _____
3. DICUP _____
4. NRREDIILFG _____
5. SSKI _____
6. DYANC _____
7. READIMR _____
8. NEIELTANV _____
9. HGU _____
10. RESO _____
11. CCHAOTOLE _____
12. ETAD _____
13. FENIDR _____
14. RCDA _____
15. HRATE _____
16. ARETETEHWS _____
17. LVOE _____
18. FRARBYUE _____
19. TFIG _____
20. NFERIDYOB _____

Check back in our March newsletter for answers!

Anniversary...

*Congratulations to Almir Otajagic,
Southport's Bell Person.*

*He will be celebrating 10 years with the
company on February 20th!*

Thank you, Almir for all your
outstanding work.



CANDY JAR CONTEST!

Guess how many candies
are in the jar and win a
prize. (Jar will be found in
the breakroom of each
property)

COVID UPDATE

People who test positive for COVID-19 should isolate for 5 days. They must seek a Dr's note in order to return. Additionally, CDC is updating the recommended quarantine period for anyone in the general public who is exposed to COVID-19. For people who are unvaccinated or are more than six months out from their second mRNA dose (or more than 2 months after the J&J vaccine) and not yet boosted, CDC now recommends quarantine for 5 days after exposure. For all those exposed, best practice includes a test for SARS-CoV-2 at day 5 after exposure. If symptoms occur, individuals should immediately quarantine until a negative test confirms symptoms are not attributable to COVID-19.

Isolation relates to behavior after a confirmed infection. Isolation for 5 days followed by wearing a well-fitting kn95 mask will minimize the risk of spreading the virus to others. Quarantine refers to the time following exposure to the virus or close contact with someone known to have COVID-19. Both updates come as the Omicron variant continues to spread throughout the U.S. and reflects the current science on when and for how long a person is infectious.”

**Please send a copy of your vaccination card to HR at
HR@thedelamar.com**